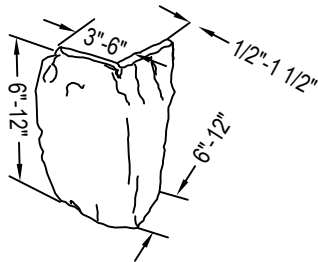
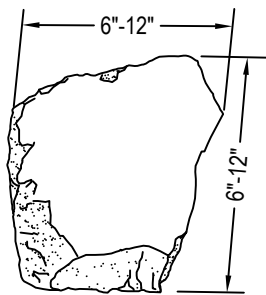




K2 STONE
 930 MAUGHAN ROAD DUKE POINT
 INDUSTRIAL PARK
 NANAIMO, BC V9X 1J2
 TOLL FREE: 1-866-722-2420
 FAX: (250) 722-2406
 www.k2stone.com



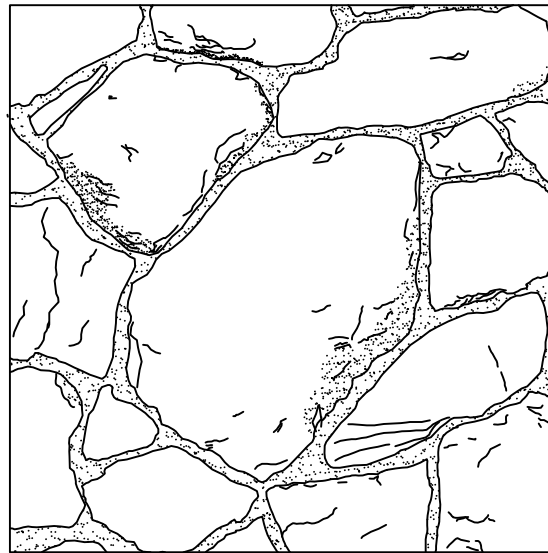
CORNER DETAIL



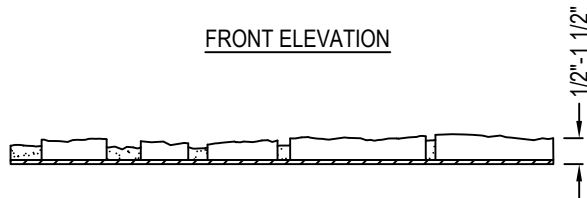
FLAT DETAIL

1/2" - 1 1/2" THICK

WEIGHT IS APPROXIMATELY 13 LBS/SF
 ALL INDIVIDUAL NATURAL STONES
 GOOD FOR INTERIOR AND EXTERIOR APPLICATIONS



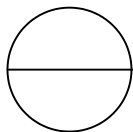
FRONT ELEVATION



SIDE ELEVATION

NOTES:

1. MORTAR JOINTS MAY VARY DEPENDING ON THE DESIRED INSTALLATION TYPE.
2. INSTALLATION TO BE COMPLETED IN ACCORDANCE WITH MANUFACTURER'S SPECIFICATIONS AND LOCAL BUILDING CODES.
3. FOR EXACT SPECIFICATION CONTACT MANUFACTURER.
4. DO NOT SCALE DRAWING.
5. THESE DRAWINGS ARE NOT FOR CONSTRUCTION PURPOSES AND ARE FOR INFORMATION PURPOSES ONLY. ALL INFORMATION CONTAINED HEREIN WAS CURRENT AT THE TIME OF DEVELOPMENT BUT MUST BE REVIEWED AND APPROVED BY THE PRODUCT MANUFACTURER TO BE CONSIDERED ACCURATE.
6. CONTRACTOR'S NOTE: FOR PRODUCT AND COMPANY INFORMATION VISIT WWW.CADDDETAILS.COM/INFO REFERENCE NUMBER 4824-071.



THINSTONE VENEER

GLACIER LAKE BASALT RANDOM